

La Trobe Art Institute and Artspace Aotearoa Residency

This residency is facilitated through an international partnership between La Trobe Art Institute (LAI) and Artspace Aotearoa. It is intended to support early-career artists from Aotearoa to travel to Djaara/Bendigo in Regional Victoria for a two week period during lawan and boyn on Djaara Country.

Lawan and boyn time is a season for harvest and growth cycles where the work of collecting seeds and tending to newly laid eggs is done. It is a time of new beginnings, where new relationships can be seeded. Drawing purpose from the Djaara season, this an opportunity for an artist who is interested in connecting with place and practices of transition and mutuality between sites and contexts.

This residency programme has been established by LAI to enable exchange between the artist, the community in which LAI is located, and LAI itself. In sharing spaces, meals, and conversations – without the pressure to produce – the selected artist is invited to work and learn alongside LAI staff. The artist-in-residence is invited to engage critically with the institution, its geographies, histories, collections, and constituents.

Indigenous artists and artists working in community are strongly encouraged to apply.

About the opportunity

This residency will take place on Djaara/Bendigo, land of the Dja Dja Wurrung people.

The successful artist will receive:

- An artist fee of \$3,577 plus \$1500 travel allowance to support airfares and ground travel
- Logistical and hosting support from the LAI team
- Opportunity to participate in additional paid public programmes at LAI (Bendigo/Djaara)
- Artists' accommodation and studio space are supplied

About the partners

La Trobe Art Institute is a public gallery situated on Djaara Country in Bendigo. Our program of exhibitions, residencies, education programs and public events invites audiences to engage with ideas through encounters with contemporary art. LAI's work is contingent on meaningful partnerships with cultural, creative and academic knowledge holders. We care for the University's seven collections and activate them for the benefit of our communities across our 6 Victorian campuses and beyond. By walking beside artists and welcoming diverse experiences, we work to bring art and

knowledge together in innovative ways. Our residency program has a proven track record of success and longevity, specifically in building cross-cultural dialogues.

Artspace Aotearoa is a public contemporary art gallery located in Tāmaki Makaurau Auckland. Founded in 1987 by artists and arts workers, it continues to be artist-led. Our work centres the ways in which art contributes to our underwork understanding and reimagining of the world in which we live. We work within a specific city context, and spiral out into national and international conversations that promote practices that present emancipatory world views. With a specific focus on developing an intergenerational kaupapa, we seek to present established, emerging and under-recognised positions. Each year Artspace Aotearoa sets one question which our exhibitions and events orbit in the company of artists and audiences. Across the year, we explore what this question offers us and what artworks and their authors can weave together. In 2025, we ask “is language large enough?”

Application process

Proposal

Please provide a brief biography (100 words), a statement of purpose in undertaking this residency and how it connects to your practice (400 words), and five images of previous work or public programmes or a link to a website. Please contact us if you would like to submit the application in an alternate form.

Key dates

EOIs open: Monday 12 May 2025

EOIs close: Monday 26 May 2025

Applicants notified: Monday 2 June 2025

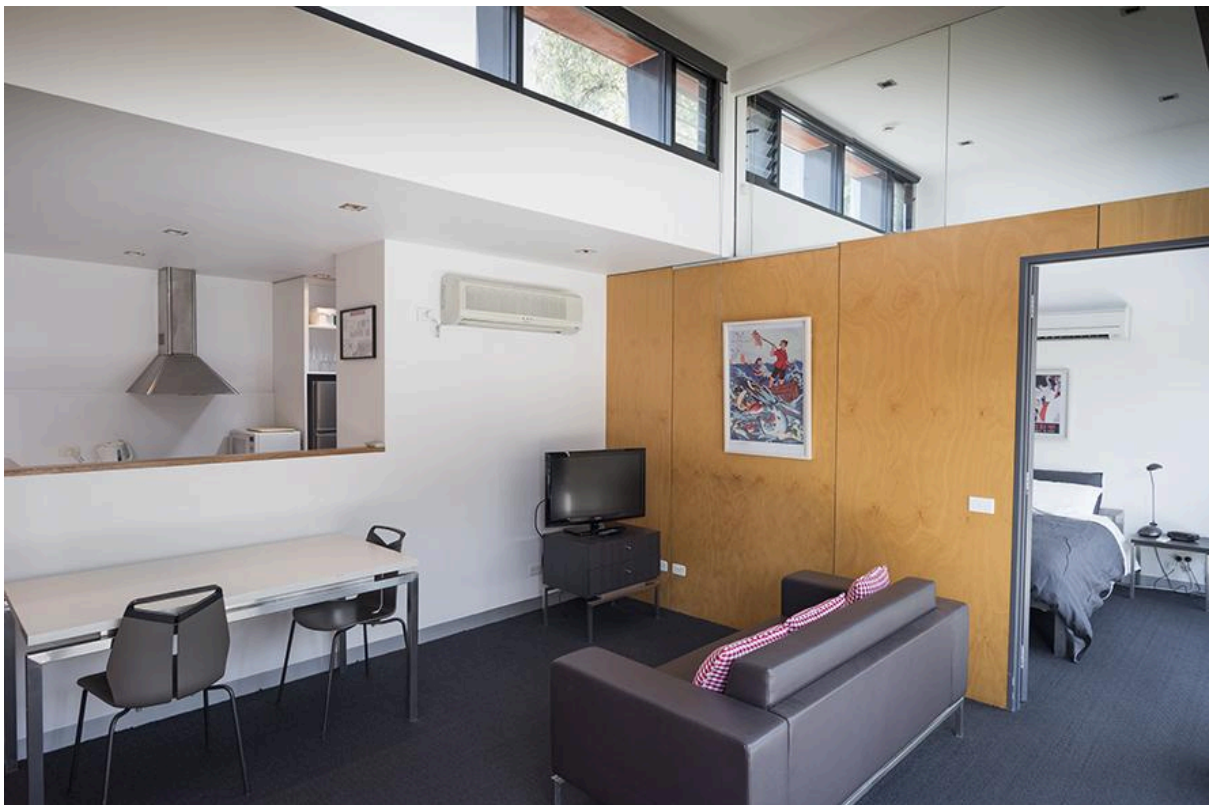
Program dates: 7 to 21 Oct 2025

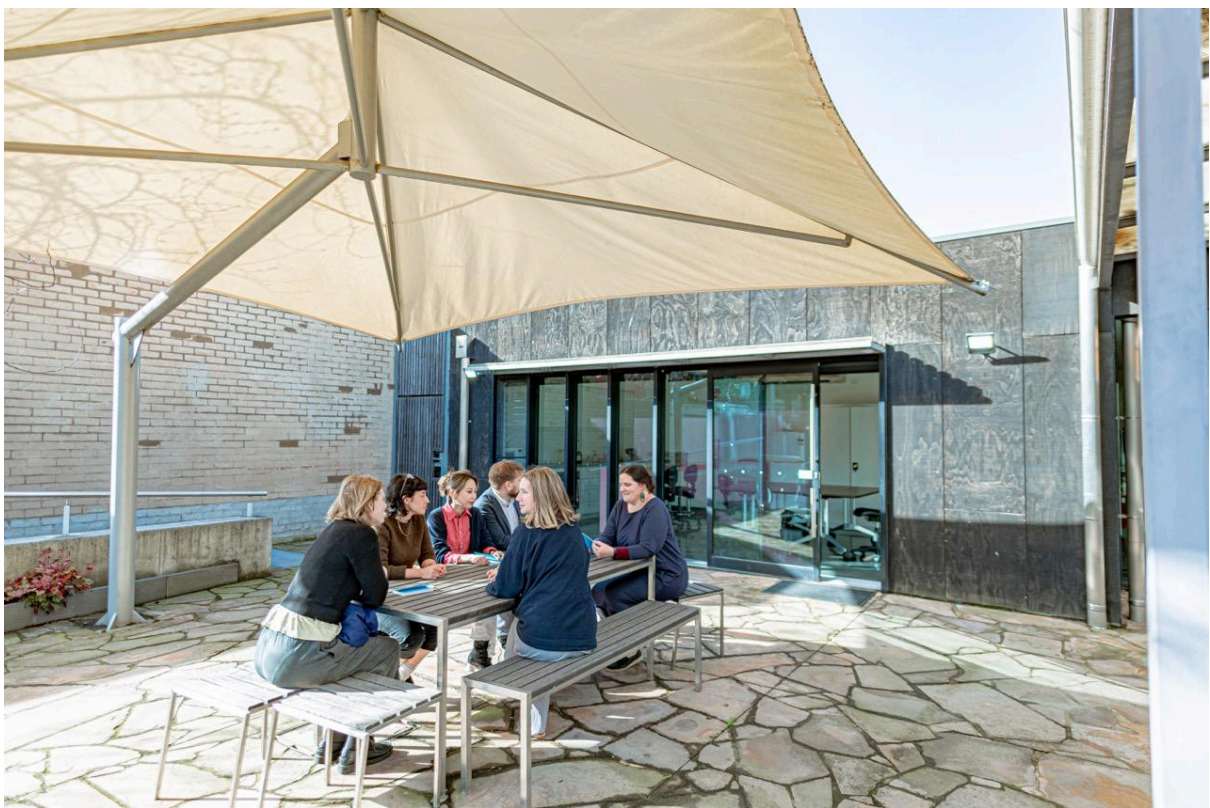
Any questions or to apply please email a.wallin@latrobe.edu.au and ruth@artspace.org.nz

This project has been assisted by the Australian Government through Creative Australia, its principal arts investment and advisory body.



Artspace Aotearoa







Photos by Nick Bebbington.